

**Welcome to the
Grissom High School Band Family!**



**Freshman Parent Orientation Meeting
May 29, 2018**



Why Are We Here Tonight?

- To provide an overview of the Grissom High School Band Program
- To cover the following key topics:
 - **WHAT IS GRISSOM BAND?**
 - **HOW MUCH TIME DOES BAND TAKE?**
 - **SCHEDULE**
 - **COST**
 - **FUNDRAISING**
 - **COMMUNICATION**
 - **VOLUNTEERING**
 - **UNIFORMS**
- To answer any questions you may have

Please Ask
Questions
As We Go!



ABOUT GRISSOM BAND

What is Grissom Band?

- A nationally-recognized Band Program, known for high standards of performance and the quality of experience given to its members
- A gold-standard program for other band programs across the county to model themselves after
- A program that prides itself on a tradition of excellence:
 - Numerous awards and national recognitions for marching, concert, and jazz bands
 - Students in band are scholars, athletes, SGA members, and Honor Society members
 - Many graduates receive band and/or academic-related scholarships and continue in band programs at college
- A program where members will:
 - Gain immense self-confidence
 - Develop a sense of pride in their work ethic and achieving high standards set by the Directors
 - Be accepted and be part of something great
 - Learn the importance of teamwork and camaraderie to achieve success
 - Have fun and gain numerous life skills

The Importance of Band

- Band teaches important life skills – Dedication, Generosity, Teamwork, Communication, Trust, Responsibility, Accountability, Time Management, Respect, Discipline
- Academic Excellence
 - Band Students are usually top scholars at their schools
 - They average 62 points higher on SAT tests
- Studies show direct correlation between music and academic and personal achievement
- Requires students to shift from a “Me” focus to an “Us” focus for each rehearsal and performance
- Band builds positive self-worth





ABOUT GRISSOM BAND (continued)

Groups That Make Up The Grissom Band

MARCHING BAND. All students are required to participate in Marching Band their first year. Marching Band is comprised of two sub-groups:

1. Football Band. These students attend all football games, perform the pre-game show at football games, play in the stands during football games, and often time assist with or serve as cast members for the Contest Band
2. Contest Band. This group does everything that Football Band does, plus performs the full marching show at Half Time for football games and at Marching Contents. Participation in Contest Band is via audition and selection by the Directors.

COLOR GUARD is the non-musical section of the Marching Band. Members enhance performances through the addition of visual aspects using various equipment such as flags, rifles, sabers, etc. ***Students who play an instrument in band and tryout for Color Guard must remain a playing member of the band in order to participate in Color Guard, otherwise they can not remain in Color Guard***

CONCERT BANDS. There are three bands in this category that increase in the level of difficulty of music as you progress through them.

1. Concert Band
2. Symphonic II Band
3. Symphonic I Band

All 3 bands perform for the MPA Competition and possibly other symphonic competitions.

They also perform 2-3 concerts every year.

JAZZ BANDS. There are two Jazz Bands at Grissom:

1. A Jazz Band—is for upperclassmen already enrolled at Grissom that have auditioned.
2. B Jazz Band is open to students of all grade levels.
 - Incoming freshmen playing saxophone, trumpet, or trombone may sign up for the B Jazz Band
 - Rhythm section instruments (piano, guitar, bass, and drums) must submit an audition recording

Audition Information for Jazz Band is found on the band website under Future Band Members

Both Jazz Bands perform 2 to 3 concerts per year. They also have community performances and out-of-town festivals and competitions that they are invited to throughout the year.





HOW MUCH TIME DOES BAND TAKE?

Marching Band Rehearsals

Football Band
Tuesdays Only from 6:00 – 7:00pm until the last rehearsal announced. Usually in September.

Contest Band
Tuesday and Thursday, 6:00-8:30pm – From the start of school to the last marching contest in October When we have a Thursday Game, Contest Band will practice Wednesday from 3:30pm to 5:30pm

Game Days - Everyone
Practice after school 4:00—4:45pm on the band field

Contest Band Percussion
An extra rehearsal on Monday evenings from 5:00-8:00pm (Subject to change)

Color Guard
An extra rehearsal on Monday evenings from 6:00—9:00pm

Football Game Information

The full marching band attends all home varsity football games and most of the away games. These are most often on Friday nights; sometimes on Thursday night.

Marching Contest Information

We will attend 2 marching contests and 1 marching exhibition. These will be on Saturdays

Saturday, September 15
Exhibition - Brewer High School

Saturday, September 29
Competition – Location TBA

Saturday, October 20
Competition - Jacksonville State University

- Only the Contest Band will perform at these competitions.
- Football Band will attend at least one competition; they won't attend if an overnight stay is required.

Symphonic / Concert Band Rehearsals

These rehearsals begin after football season and go through the beginning of May.

Symphonic Band I
To be determined

Symphonic Band II
To be determined

Concert Band
To be determined

All rehearsals and performances are required attendance. Failure to do so results in a failing grade for the 9 weeks in which the infraction occurs. Band in high school is a performance-based class!





SCHEDULE

Spring / Summer Camp Schedule

Attendance is required!

- Rookie CampMay 29-June 1 - 8am-12pm
- Color Guard Camp #1June 4-8 - 8am-3pm
- Color Guard Camp #2July 9-13 - 8am-3pm
- Contest Band Percussion Camp 1....June 4-8 - 8am-3pm
- Contest Band Percussion Camp 2 ...July 9-13 - 8am-3pm
(extra sectionals will be announced)
- Uniform FittingsJuly 25-26. Times TBA
- Pre-CampJuly 25-27 - 8am-12pm
- Band CampJuly 30-August 3
**8am-12pm – Football Band and Contest Band
1:30-4pm and 6-9pm – Contest Band Only**

Band Family Picnic and Preview Show

Join us at the end of band camp week for the Grissom Band Family Picnic and Marching Program Preview Show.

- Friday, August 3, 6:00pm at Milton Frank Stadium
- Catered meal orders will be taken.
- More info coming in July

Football Games and Marching Competitions

- 8/24 (Fri).....Hazel Green @ MF
- 8/31 (Fri)Lee @ MF
- 9/7 (Fri)Huntsville @ MF
- 9/14 (Fri)...Sparkman @ Sparkman
- 9/15 (Sat).....Marching Exhibition @ Brewer
- 9/21 (Fri).....Austin @ Austin
- 9/28 (Fri)No Game
- 9/29 (Sat)...Marching Competition @ TBD
- 10/5 (Fri)Bob Jones @ MF
- 10/11 (Thu).....James Clemens @ James Clemens
- 10/19 (Fri).....Florence@Florence
- 10/20 (Sat) ...Marching Competition @ Jacksonville State University
- 10/26 (Fri)Gadsden @ MF
- 11/2 (Fri) ...Buckhorn@ Buckhorn

@MF = Milton Frank Stadium

Marching Season Rehearsal Schedule

- School BeginsWednesday, August 6
- Color GuardMondays, 6-9pm
- PercussionMondays, 5-8pm
- Football BandTuesdays, 6-7pm
until last rehearsal announced in September
- Contest BandTuesday and Thursday, 6-8:30pm
- Contest Band.....Wednesdays*, 4:00-5:30pm
(*only on weeks with a Thursday night game)
- All Marching BandGame Days, 4:00-4:45pm

Symphonic / Concert Band Rehearsals

After football season through the beginning of May
To be determined.

- Symphonic I
- Symphonic II
- Concert Band

All rehearsals and performances are required attendance. Failure to do so results in a failing grade for the 9 weeks in which the infraction occurs. Band in high school is a performance-based class!





COST

BAND FEES - \$600 total; details below

Base\$550

- \$50Due during Rookie Camp
- \$250Due at Uniform Fitting
- \$140Due October 1st
- \$110.....Due February 1st

Transportation & Away Game Meals.....\$100

These payments are not fee exempt. All students pay these.

- \$25Due at Uniform Fitting
- \$50Due October 1st
- \$25Due February 1st

Instrument Rental Fees.....\$75 per semester

These payments are not fee exempt. All students who rent pay these. (Summer, Fall, Spring)

Applies to all percussionists and to anyone else who rents an instrument from the band. Contest Band percussionists rent all 3 semesters; others may only rent one or two semesters

- \$75, Summer Instr. Rental FeeDue at Uniform Fitting
- \$75, Fall Instr. Rental FeeDue October 1st
- \$75, Spring Instr. Rental FeeDue February 1st

Miscellaneous Information

- During the summer, please send payments to our PO Box. **GBPA. PO Box 4335, Huntsville, AL 35815**
- During the school year, there are 2 other payment options:
 - Pay using Paypal through your Charms Account
 - Treasurer's Box in the band room. Envelope with name and payment explanation written.

COLOR GUARD ONLY FEES - \$440 total; details below

Base\$390

- \$290Due during Rookie Camp
- \$100Due October 1st

Transportation & Away Game Meals.....\$75

These payments are not fee exempt. All students pay these.

- \$25Due at Uniform Fitting
- \$50Due October 1st

Other Costs

In addition to the fees listed below, other minor expenses will occur throughout the school year for things such as gloves or fees for special events and performances. These are usually minor in value (\$20-\$40) and occur infrequently.

\$32, Marching Shoes.....Due at Uniform Fitting

20% late payment fee will be applied for payments received after the deadline unless prior arrangements made





FUNDRAISING

Fundraising That Benefits Everyone!

Here is some information on our most common fundraising activities. All result in money for the band, and some result in credits applied to your student's band account. Credits can be applied towards band fees, trips, spirit wear, etc.

Grissom Fruit Sales

- Our single largest and most important fundraiser
- 4 fruit sales; monthly from November to February
- We will credit \$5 per hour for each hour worked by a student or parent to the student's band account
- Contact for more info: fruitsales@grissomband.org

Von Braun Center (VBC) Concessions

- Parents and students age 16 and up can work concessions for events at the VBC.
- \$8 per hour credited student's band account.
- Contact: vp2@grissomband.org for more info

Publix Partners

- Use your Publix Partners keychain card when you shop at Publix, and a portion of your total will be given to the GHS Tiger Band.
- Get keychain cards for all your friends and family members!

Spirit Wear

- Grissom Band Gear – t-shirts, sweatshirts, magnets, etc.
- <http://GrissomBandStore.com> - Every purchase benefits the band.

Scrip

- Buy gift cards at face value from restaurants or merchants you love
- A portion is returned to the band and a portion is credited to your student's band account.
- See "Scrip Merchants" on the GBPA website http://www.grissomband.com/uploads/2/1/7/3/21739038/brand_category_report.pdf
- Contact: scrip@grissomband.org for more info

Mattress Sale

- A great fundraiser for the band. Please help us get the word out!
- Scheduled for Sunday, October 28th from 11am to 5pm in the band room

Amazon Smile Program

- A portion of every Amazon purchase is donated back to the band.
- Just start your shopping at: <https://smile.amazon.com/ch/63-0867861>

Misc Fundraisers Throughout the Year

- Will do several more fundraisers throughout the year, both big and small
- We would love your help on these!
- These help to offset expenses that band fees alone do not cover.





COMMUNICATION

Stay Connected to the Band

CHARMS -- **This is your lifeline to the band.** www.charmsoffice.com

- Access to student's financial info with payment options
- Access to the forms, handouts, and the band calendar with all rehearsals, major events, and meetings for the entire year. ***You can sync this calendar to your smartphone!*** See the band website (under the Parents Tab) for instructions.
- Emails sent from the band regarding trips, events, payments reminders, volunteer opportunities, etc
- Contact any of the board members for assistance logging in or using Charms.
- ***It is VERY IMPORTANT that we have correct contact information in Charms for every student and parent.***
- Incoming 9th graders will be added to Charms soon.

FACEBOOK -- www.facebook.com/GrissomHighSchoolBand or search for "Grissom High School Band"

BAND WEBPAGE -- www.GrissomBand.com

GRISSOM BAND GROUP TEXT SERVICE

- This is a primary method for the directors to communicate with students and parents
- To sign up, text @ghsb1819 to this number 81010 from each phone that should receive band announcements
- In addition, each instrument section will have their own group text service for section-specific announcements. Information on how to sign up for these will be given at rookie camp.
- We will not overload you with texts

GBPA MONTHLY PARENTS MEETINGS

- Held the 4th Monday of most months at **7pm** in the Band Room or Auditorium. Not held in DEC, MAY, JUN, or JUL
- The first regular meeting of the 2018-2019 school year will be on August 27th. Mark your calendar





COMMUNICATION (continued)

Grissom Band Parents Association (GBPA) – Board Members

Here is the contact information for members of the GBPA Board. Don't hesitate to contact us if you need anything!

POSITION	NAME	EMAIL ADDRESS
Band Director	Theo Vernon	jtvjazz2@me.com
Band Director	Brent Harris	scvbrent@gmail.com
GBPA President	Bill Ward	president@grissomband.org
GBPA 1 st Vice President	Kelly Black	VP1@grissomband.org
GBPA 2 nd Vice President	Greg Olmstead	VP2@grissomband.org
GBPA Treasurer 1	Stacie Flinn	treasurers@grissomband.org
GBPA Treasurer 2	Mike Fanning	treasurers@grissomband.org
GBPA Secretary	Jennifer Sherman	secretary@grissomband.org





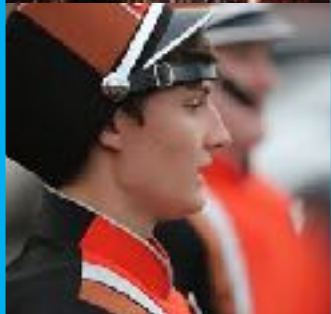
VOLUNTEERING

Join a Committee

- Contact any of the committee chairs shown below for information on how you can help.
- It takes a lot of work to keep the band running. Please help and be part of this family!

Committee	Chairperson	Email Address
Band Banquet	Kelly Black	banquet@grissomband.org
Chaperones	POSITION VACANT *	chaperones@grissomband.org
Color Guard	Tonia Parker	colorguard@grissomband.org
Concerts	Rachel Marshall	concerts@grissomband.org
Fruit Sales	Chris Black	fruitsales@grissomband.org
Historian	Donna Harper	historian@grissomband.org
Hospitality	POSITION VACANT *	hospitality@grissomband.org
Instrument Rental	POSITION VACANT *	instrumentrental@grissomband.org
Newsletter	POSITION VACANT *	newsletter@grissomband.org
Publicity	Brandi Burnham	publicity@grissomband.org
Scrip	Amber Hoffmeyer	scrip@grissomband.org
Spirit Wear	Sharon Morgan	spirit@grissomband.org
Stadium Setup	Tally LaFlamme	stadium@grissomband.org
Transportation	Crista Meeks	transportation@grissomband.org
Trucks	Cameron Grace	trucks@grissomband.org
Uniforms	Anna Grace and Beverly Olmsted	uniforms@grissomband.org
VBC Coordinator	Shema Joseph	vbc@grissomband.org
Ways and Means	Chris Black, Amber Hoffmeyer, Christine Watson	waysmeans@grissomband.org
Webmaster	Theo Vernon	webmaster@grissomband.org

** Email addresses for vacant positions are monitored by the GBPA Board. Please feel free to email if interested in volunteering.*



UNIFORMS

Marching Band Summer Uniform

All students must provide the following:

- **White** Tennis Shoes – for ALL marching band rehearsals and Summer Uniform. **Must have by Pre-Camp.**
- Khaki Shorts. Not short shorts.
- Band Polo Shirt. The first polo shirt is provided by the band. Additional or replacement shirts can be purchased for \$30.

Symphonic / Concert Band Uniform

- Ladies wear dresses and men wear tuxedos. These are provided by the band.
- Men provide their own white tuxedo shirt.
- Shoes:
 - Men wear black marching shoes.
 - Ladies wear black closed-toe closed-heel flat shoes.
- Fittings for Symphonic / Concert Band uniforms will be announced at a later time via Charms.

Uniform Fitting – July 25 and 26

- Students get fitted for their marching uniform
- Buy your marching shoes, socks, gloves, etc
- Add or update contact information in Charms if needed
- Detailed schedule for Uniform Fitting will be sent via CHARMS

We ask each family to donate two cases of bottled water by the Uniform Fitting. Please bring your water at this time if you have not already done so prior to Uniform Fitting.



Oh the Places You Will Go!

Places the Grissom Band Has Gone In Recent Years:



Chicago



Pearl Harbor



New Orleans



Hollywood



Washington, DC



Savannah



St. Patrick's Day 2020



Grissom Band accepted to march in the 2020

**ST PATRICK'S DAY
PARADE**

Dublin, Ireland

More information on the band website!

St. Patrick's Day 2020

Thank you for coming out tonight!

- ❖ We hope we have answered some of your questions about the Grissom Band!
- ❖ Please don't hesitate to contact the band directors or any board member if you have questions.
- ❖ www.grissomband.com

