

**Welcome to the
Grissom High School Band Family!**



**Freshman Parent Orientation Meeting
April 17, 2025**



Why Are We Here Tonight?

- To provide an overview of the Grissom High School Band Program
- To cover the following key topics:
 - **WHAT IS GRISSOM BAND?**
 - **HOW MUCH TIME DOES BAND TAKE?**
 - **SCHEDULE**
 - **COST**
 - **FUNDRAISING**
 - **COMMUNICATION**
 - **VOLUNTEERING**
 - **UNIFORMS**
- To answer any questions, you may have

**Please Ask
Questions
As We Go!**

ABOUT GRISSOM BAND

What is Grissom Band?

- A nationally-recognized Band Program, known for high standards of performance and the quality of experience given to its members
- A gold-standard program for other band programs across the county to model themselves after
- A program that prides itself on a tradition of excellence:
 - Numerous awards and national recognitions for marching, concert, and jazz bands
 - Students in band are scholars, athletes, SGA members, and Honor Society members
 - Many graduates receive band and/or academic-related scholarships and continue in band programs at college
- A program where members will:
 - Gain immense self-confidence
 - Develop a sense of pride in their work ethic and achieving high standards set by the Directors
 - Be accepted and be part of something great
 - Learn the importance of teamwork and camaraderie to achieve success
 - Have fun and gain numerous life skills

The Importance of Band

- Band teaches important life skills – Dedication, Generosity, Teamwork, Communication, Trust, Responsibility, Accountability, Time Management, Respect, Discipline
- Academic Excellence
 - Band Students are usually top scholars at their schools
 - They average 62 points higher on SAT tests
- Studies show direct correlation between music and academic and personal achievement
- Requires students to shift from a “Me” focus to an “Us” focus for each rehearsal and performance
- Band builds positive self-worth





ABOUT GRISSOM BAND (continued)

Groups That Make Up The Grissom Band

MARCHING BAND. *All students are required to participate in Marching Band their first year.* Marching Band is comprised of two sub-groups:

1. Football Band. These students attend all football games, perform the pre-game show at football games, play in the stands during football games, and often time assist with or serve as cast members for the Contest Band
2. Contest Band. This group does everything that Football Band does, plus performs the full marching show at Half Time for football games and competes at 2 to 3 Marching Contents. Participation in Contest Band is via selection by the Directors. Freshmen can audition and be a part of the Contest Band.

COLOR GUARD is a section of the marching band that provides additional visual aspects to the performance of the Marching Band. Members enhance performances through using various equipment such as flags, rifles, sabers, etc. ***Students who play an instrument in 8th grade band and tryout for Color Guard must remain a playing member of the band for at least one year in order to participate in Color Guard.***

CONCERT BAND. There are three bands in this category that increase in the level of difficulty of music as you progress through them.

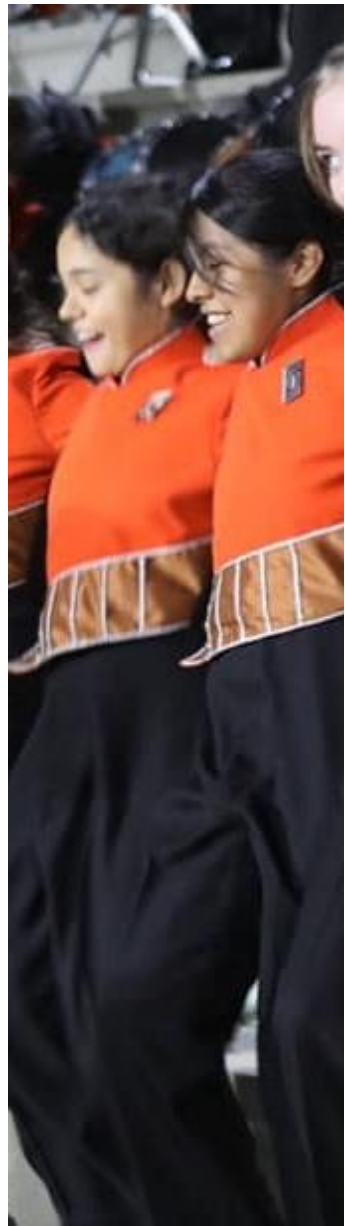
1. Concert Band
2. Symphonic II Band
3. Symphonic I Band

All 3 bands perform for the State Music Performance Assessment, as well as 2-3 concerts as well as Symphonic Band Camp in early Feb.

JAZZ BANDS

1. A Jazz Band—is for upperclassmen already enrolled at Grissom – this group will be selected by audition during the Spring Semester.
2. B Jazz Band is open to students of all grade levels.
 - Incoming freshmen playing saxophone, trumpet, or trombone may sign up for the B Jazz Band
 - Rhythm section instruments (piano, guitar, bass, and drums) must submit an audition recording

Audition Information for Jazz Band is found on the band website under Future Band Members. Both Jazz Bands perform 2 to 3 concerts per year. They may also have community performances and out-of-town festivals and competitions that they are invited to throughout the year.





HOW MUCH TIME DOES BAND TAKE?

Marching Band Rehearsals

Football Band	Contest Band
Tuesdays: 6:00 – 7:00pm until the last rehearsal is announced. Usually in early September.	Tuesday and Thursday, 6:00-8:30pm From the start of school to the last marching contest in October <i>*If we have a Thursday night game, the contest band will practice Wednesday from 4-5:30pm</i>
Game Days - Everyone	Marching Band Percussion & Color Guard
Practice after school 4:00-4:45pm on the band field	One extra rehearsal Monday evenings from 6:00-8:30pm

Football Game Information

The marching band attends all home varsity football games and close away games. These are most often on Friday nights; sometimes on a Thursday night.

Marching Contest Information

The Contest Band will attend 2 to 3 marching contests. These are all-day events on Saturdays.

Saturday	Saturday	Saturday
September 13th	September 20th	October 18th

Symphonic / Concert Band Rehearsals

These rehearsals begin after football season and go through the beginning of May.

Symphonic Band I

Tuesdays - 3:50-5:30pm

Symphonic Band II

Thursdays - 3:50-5:30pm

Concert Band

Mondays - 3:50-5:30pm

All rehearsals and performances are required attendance. Failure to do so results in a failing grade for the 9 weeks in which the infraction occurs. Band in high school is a performance-based class!





SCHEDULES

Summer Camp Schedule

Percussion/Guard Camp #1.....June 2-6 - 8am-3pm

Percussion/Guard Camp #2.....June 23-27 - 8am-3pm

Band Camp.....July 21-25 - 8am-9pm

Band Camp.....July 28-Aug 1 - 8am-9pm

Band Camp Preview Show – Aug 1st – 7PM

Join us at the end of band camp week for the Preview Show to see all the great work your kids have done!

What to you need for band camp?

- Instrument/Equipment/Sticks/Mallets, etc.
- Phone with UDB and BEAM music apps downloaded
- Percussion will need music in sheet protectors
- Hat
- Sunscreen!
- Bug Spray
- Deodorant 😊
- Large Water Jug
- Sunglasses
- Athletic tennis shoes
- Pencil
- Music memorized!

Football Games and Marching Competitions

8/22 (Fri) Lee @MF

8/29 (Fri) Bye Week

9/5 (Fri) Huntsville @MF

9/12 (Fri) Bob Jones AWAY

9/13 (Sat) Marching Contest - Brewer

9/19 (Fri) James Clemens AWAY

9/20 (Sat) Marching Contest – Bob Jones

9/26 (Fri) Albertville @JD (HC)

10/4 (Fri) Guntersville @JD

10/6 - 10 Fall Break

10/17 (Fri) Sparkman AWAY

10/18 (Sat) Marching Contest - Hoover

10/24 (Fri) Austin @JD

10/31 (Fri) Buckhorn@JD (Senior)

11/11 (Tues) Veterans Day Parade

@JD = Joe Davis Stadium

@MF = Milton Frank Stadium

AWAY = Band will travel by bus

Concert Band Concerts

Christmas Concert.....Early Dec

Symphonic Band Camp.....Early Feb.

Spring Concert.....Early May

Symphonic Band Camp

An intensive 3-day camp to prepare the students for MPA in early Feb. Nationally recognized guest conductors work with each ensemble and all students spend time with college-level teachers on their specific instrument.

Typical Schedule

Thurs: 4pm-9pm (dinner included)

Fri: During school, masterclasses, band family pot-luck dinner, student/faculty recital

Sat: Morning rehearsal, college info sesh. Preview concert at 1pm

All rehearsals and performances are required attendance.





BAND CAMP SCHEDULE

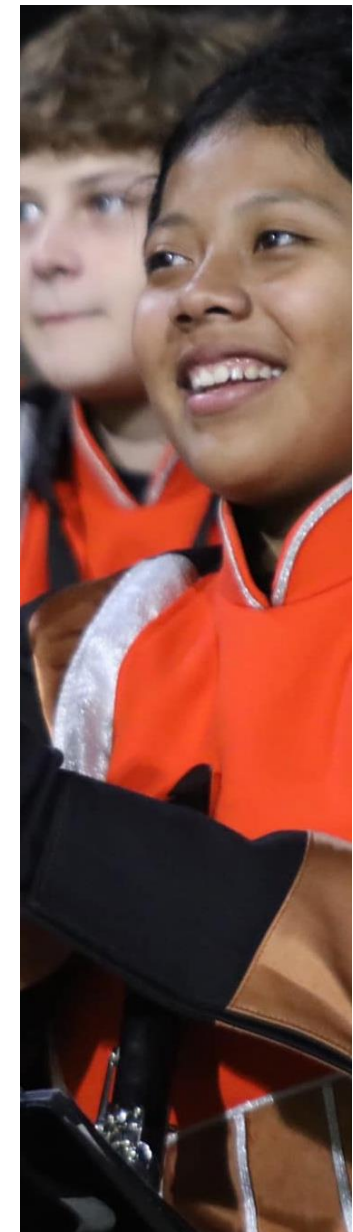
TENTATIVE!

FOOTBALL BAND SCHEDULE

(Includes ALL Students in the Marching Band at Grissom HS)

WEEK 1	Monday - 7/15	Tuesday - 7/16	Wednesday - 7/17	Thursday - 7/18	Friday - 7/19
Outdoor Drill	8am-12pm	8am-12pm	8am-12pm	8am-12pm	8am-12pm
Indoor Music	1:15-3:45pm	1:15-3:45pm			
Outdoor Drill & Music	6pm-9pm	6pm-9pm			

WEEK 2	Monday - 7/22	Tuesday - 7/23	Wednesday - 7/24	Thursday - 7/25	Friday - 7/26
Outdoor Drill	8am-12pm	8am-12pm	8am-12pm		8am-12pm
Indoor Music					
Outdoor Drill & Music					<i>Preview Show @ Grissom HS - 7PM</i>





BAND CAMP SCHEDULE

TENTATIVE!

CONTEST BAND ONLY

WEEK 1	Monday - 7/15	Tuesday - 7/16	Wednesday - 7/17	Thursday - 7/18	Friday - 7/19
Outdoor Drill	8am-12pm	8am-12pm	8am-12pm	8am-12pm	8am-12pm
Indoor Music	1:15-3:45pm	1:15-3:45pm	1:15-3:45pm	1:15-3:45pm	1:15-3:45pm
Outdoor Drill & Music	6pm-9pm	6pm-9pm	6pm-9pm	6pm-9pm	6pm-9pm

WEEK 2	Monday - 7/22	Tuesday - 7/23	Wednesday - 7/24	Thursday - 7/25	Friday - 7/26
Outdoor Drill	8am-12pm	8am-12pm	8am-12pm		8am-12pm
Indoor Music	1:15-3:45pm	1:15-3:45pm	1:15-3:45pm		
Outdoor Drill & Music	6pm-9pm	6pm-9pm	6pm-9pm	6pm-9pm	<i>Preview Show @ Grissom HS - 7PM</i>





COST

What is the overall cost?

Base Fee.....\$700

\$100	Due May 1st
\$250	Due at Uniform Fittings (Aug 9 th)
\$200	Due October 1 st
\$150	Due February 1 st

Other Costs for Band Members

In addition to the fees listed above, other minor expenses will occur throughout the school year for uniform parts or for special events. These are usually minor in value (\$20-\$40) and occur infrequently.

\$32	Marching Shoes (used all 4 years).....	Due at Uniform Fitting
\$3	Gloves.....	As needed
	Tennis shoes, black socks, etc.	As needed

**Instrument Rental Fees.....\$75 per semester
(Summer, Fall, Spring)**

Applies to all percussionists and to anyone else who rents an instrument from the band. Marching Band percussionists rent all 3 semesters; others may only rent for two semesters

\$75, Summer Instr. Rental Fee.....	Due at Uniform Fitting
\$75, Fall Instr. Rental Fee.....	Due October 1 st
\$75, Spring Instr. Rental Fee.....	Due February 1 st

What do you get for that amount?

- Band Polo Shirt
- Two uniforms - both Marching & Concert
- Transportation to Away Games & Competitions
- Meals before all Away Games
- Specialized instruction from multiple instructors throughout the entire school year, during and outside of the school day
- Custom designed pregame and halftime marching show
- Music & Drill smartphone apps for student use
- 2 to 3 Marching Competitions
- Symphonic Band Camp in February (Guest Conductors and Masterclasses)
- Concert Music for all 3 bands
- State Music Performance Assessment in March
- More!

Payment Information

- Paypal through MyMusicOffice account
- Checks – make payable to **GBPA**. Turn into treasurer’s box in the band room. Envelope with name and what payment is for.
- Checks can also be mailed: **PO Box 4335, Huntsville, AL 35815**

20% late payment fee will be applied for payments received after the deadline unless prior arrangements made



Fundraising That Benefits Everyone!

Here is some information on our most common fundraising activities. All result in money for the band, and some result in credits applied to your student's band account. Credits can be applied towards band fees, trips, spirit wear, etc.

Car Washes

- Participants earn band credits to their band fees through ticket sales and participation
- Dates: TBD at Bryant Bank on Bailey Cove

Grissom Fruit Sale

- Pre-Order Sale
- Contact for more info: fruitsales@grissomband.org

Mattress Sale

- A great fundraiser for the band. Please help us get the word out!
- Sunday, October 22nd from 11am to 5pm in the band room

Publix Partners

- Create an account on Publix.com and select Grissom Band from the choice of available charities
- When you check out at Publix, just enter the phone number that you listed in the account, and Grissom Band will receive a portion of your money spent

Spirit Wear

- Grissom Band Gear – t-shirts, sweatshirts, magnets, etc.

Von Braun Center (VBC) Concessions

- Parents and students age 16 and up can work concessions for events at the VBC.
- Approx.. \$8-12 per hour credited student's band account.
- Contact: vbc@grissomband.org for more info

Misc Fundraisers Throughout the Year

- Will do several more fundraisers throughout the year, both big and small
- These help to offset expenses that band fees alone do not cover.



COMMUNICATION

Stay Connected to the Band

MyMusicOffice -- **This is your lifeline to the band.** <https://mymusicoffice.com>

- Access to student's financial info with payment options
- Access to the band calendar with all rehearsals, major events, and meetings for the entire year. ***Please sync this calendar to your smartphone!***
- Emails sent from the band regarding trips, events, payments reminders, volunteer opportunities, etc.
- ***It is VERY IMPORTANT that we have correct contact information in MyMusicOffice for every student and parent.***
- Incoming 9th graders will be added to MyMusicOffice in June.

FACEBOOK -- www.facebook.com/GrissomHighSchoolBand or search for "Grissom High School Band"

BAND WEBPAGE -- www.GrissomBand.com

REMIND 101 TEXT MESSAGING

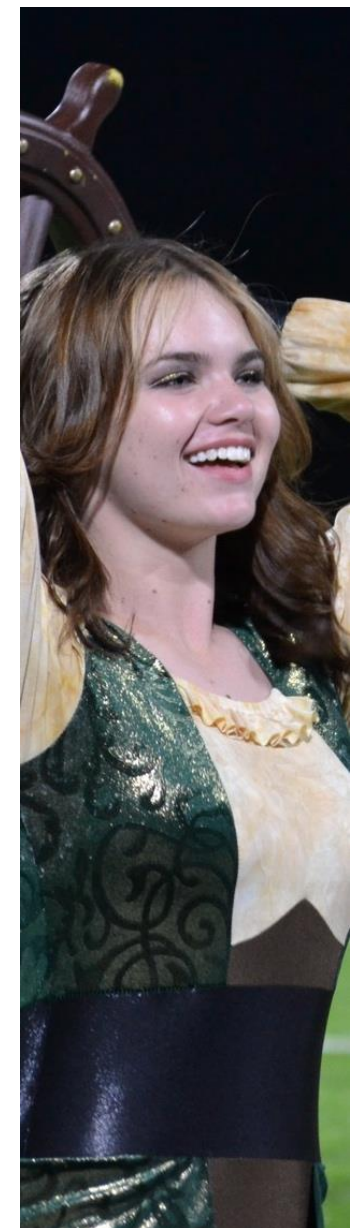
- This is a primary method for the directors to communicate with students and parents
- **To sign up, text @ghsb2526 to this number 81010 from each phone that should receive band announcements.**
- In addition, each instrument section will have their own group text service for section-specific announcements.

GBPA PARENTS MEETINGS

- Held the 4th Monday of most months at **7pm** in the Band Room or Auditorium. Not held in DEC, MAY, JUN, or JUL
- The first regular meeting of the 2025-2026 school year will be on August 28th. Mark your calendar!

**Join the Remind 101
Text Msg Group:**

**Send: @ghsb2526
to
81010**





COMMUNICATION (continued)

Grissom Band Parents Association (GBPA) – Board Members

Here is the contact information for members of the GBPA Board. Don't hesitate to contact us if you need anything!

POSITION	NAME	EMAIL ADDRESS
Band Director	Brent Harris	brent.harris@hsv-k12.org
Band Director	TBA	TBA
GBPA President	Todd Stiles	president@grissomband.org
GBPA 1 st Vice President	Ashley Dyer	VP1@grissomband.org
GBPA 2 nd Vice President	TBA	VP2@grissomband.org
GBPA Treasurer 1	Elizabeth Shaffer	treasurers@grissomband.org
GBPA Treasurer 2	Laura Frame	treasurers@grissomband.org
GBPA Secretary	Janette Parker	secretary@grissomband.org



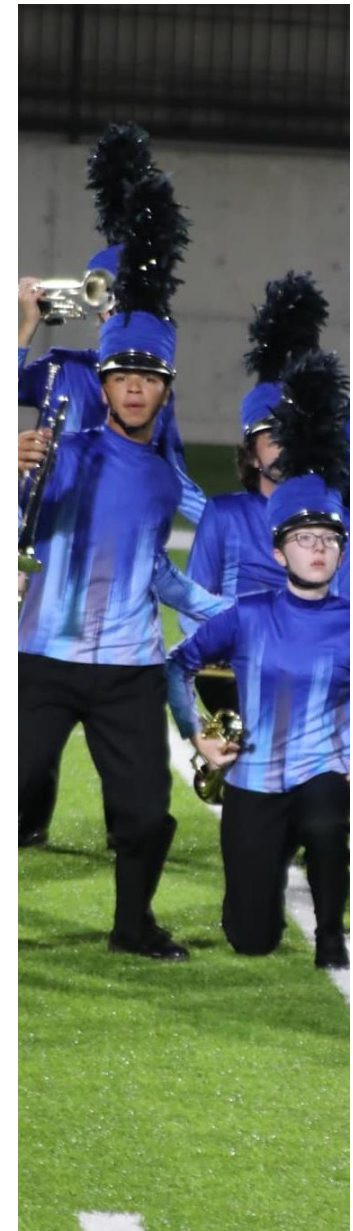


VOLUNTEERING

Join a Committee

- Contact any of the committee chairs shown below for information on how you can help.
- It takes a lot of work to keep the band running. Please help and be part of this family!

Committee	Chairperson	Email
Band Banquet	Open	banquet@grissomband.org
Chaperones	Open	chaperones@grissomband.org
Color Guard	Chrissy Thrasher	colorguard@grissomband.org
Concerts	Nicole Jackson	concerts@grissomband.org
Fruit Sales	Open	fruitsales@grissomband.org
Historian	Jennifer Forsythe	historian@grissomband.org
Hospitality	Open	hospitality@grissomband.org
Spirit Wear	Kyle Morneault	spirit@grissomband.org
Stadium Setup	Layla Niemann	stadium@grissomband.org
Transportation	Open	transportation@grissomband.org
Trucks	Todd Stiles	trucks@grissomband.org
Uniforms	Ashley Dyer/Jen Forsythe	uniforms@grissomband.org
VBC Coordinator	Open	vbc@grissomband.org
Webmaster	Brent Harris	webmaster@grissomband.org



UNIFORMS

Marching Band Summer Uniform

All students must provide the following:

- Tennis Shoes – worn for ALL marching band rehearsals and Summer Uniform. **No sandals or “hey dudes,” etc.**
- Khaki Shorts. Not short shorts.
- Band Polo Shirt. The first polo shirt is provided by the band. Additional or replacement shirts can be purchased.

Symphonic / Concert Band Uniform

- Ladies wear dresses and men wear tuxedos. These are provided by the band.
- Men provide their own black dress shirt (We will place orders for the students and charge to your band account through MyMusicOffice)
- Shoes:
 - Men wear black marching shoes.
 - Ladies wear black closed-toe closed-heel flat shoes.
- Fittings for Symphonic / Concert Band uniforms will be announced later via MyMusicOffice.

Uniform Fitting – August 9th

- Students get fitted for their marching uniform
- Buy your marching shoes, socks, gloves, etc.
- Add or update contact information in MyMusicOffice if needed
- Pay fees if you haven’t already
- Detailed schedule for Uniform Fitting will be sent via MyMusicOffice
- Color Guard are usually fitted (measured) during summer camp #1

Uniform Fitting Times

- Last Name A-F: 10:45am – 12:15pm
- Last Name G-O: 12:30 – 2pm
- Last Name P-Z: 2:15pm – 3:45pm

We ask each family to donate two cases of bottled water by the Uniform Fitting. Please bring your water at this time if you have not already done so prior to Uniform Fitting.

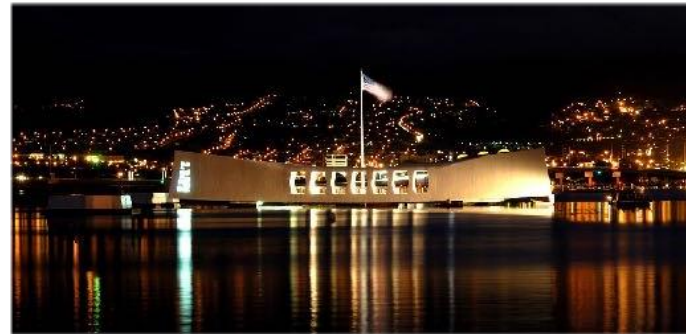


Oh the Places You Will Go!

Places the Grissom Band Has Gone In Recent Years:



Chicago



Pearl Harbor



New Orleans



Hollywood



Washington, DC



New York City

What to do next?

Complete Google Form for 1st Year Member Registration

- Information collected in this form will be loaded into MyMusicOffice, you will receive your login information in June
- Link will also be on the “prospective members” page on www.grissomband.com

Turn in 1st Year Member Contract

- Be sure to read through the Band Handbook and sign the contract – indicate if your student would like to be in the football band or the contest band

Turn in Initial Deposit - \$100

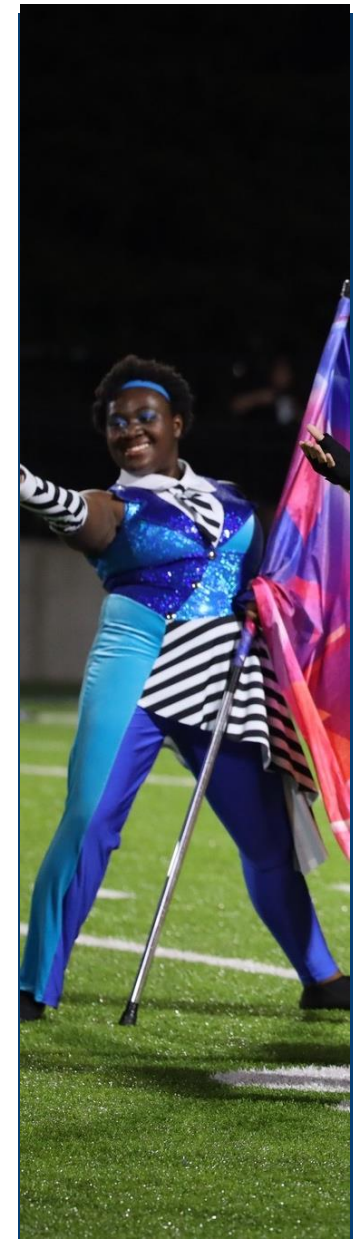
- Both the contract and deposit may be turned into the treasurer’s box in the Grissom Band Room – or to the Challenger/Mtn Gap/Whitesburg band director

***** DEADLINE for these items is May 1st *****

Contest Band audition results will be posted online during May.

- Watch for email communication on details to be ready for band camp!

Scan this QR code to fill out Registration Form



Thank you for coming out tonight!

- ❖ We hope we have answered some of your questions about the Grissom Band!
- ❖ Please don't hesitate to contact the band directors or any board member if you have questions.
- ❖ www.grissomband.com

