

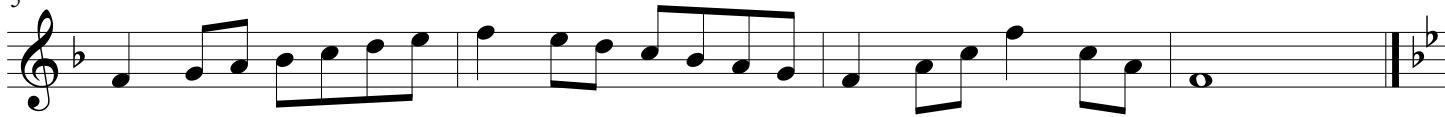
Middle School Scale Sheet

Saxophone - revised 6/2018

C Scale



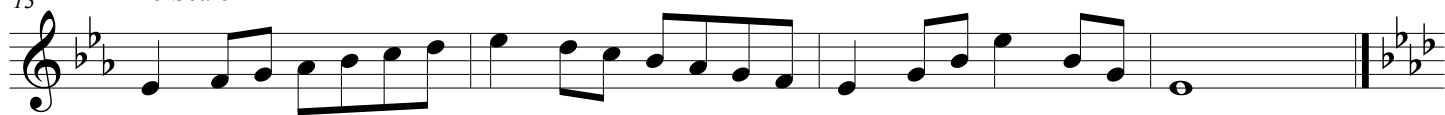
5 F Scale



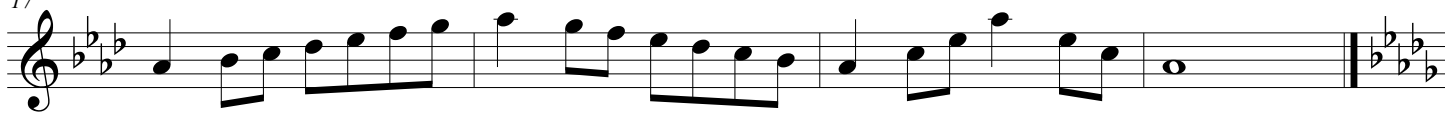
9 Bb Scale



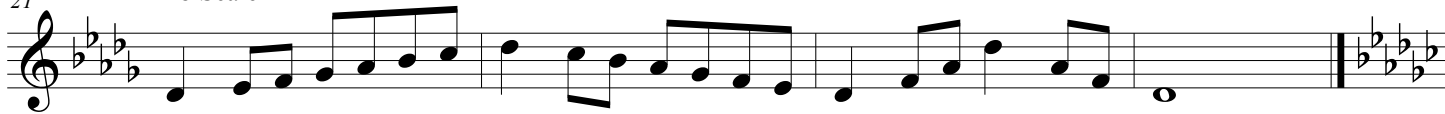
13 Eb Scale



17 Ab Scale



21 Db Scale



25 Gb Scale



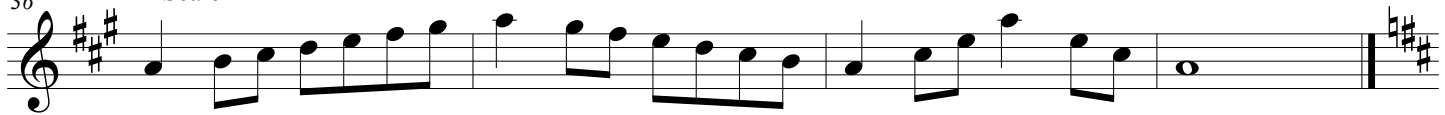
29 B Scale



32 E Scale



36 A Scale



40 D Scale

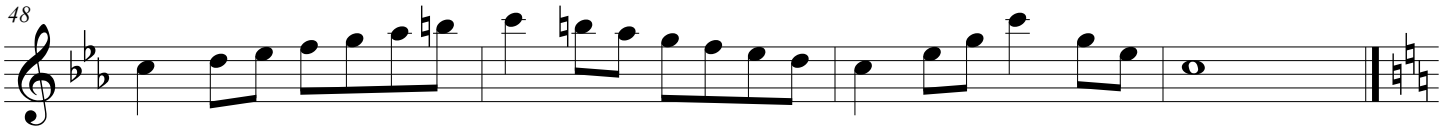


44 G Scale



C Harmonic Minor Scale

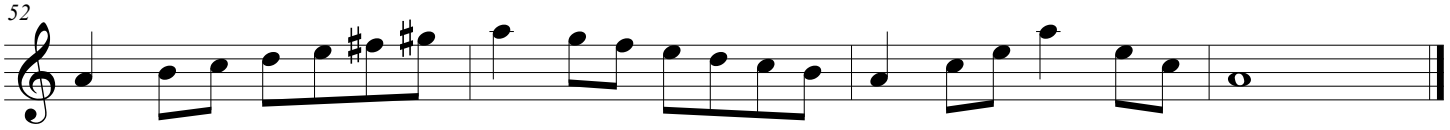
48



Musical notation for the C Harmonic Minor Scale. It begins with a treble clef and a key signature of two flats (Bb and Eb). The scale is written in a single line, starting on middle C (C4) and ascending to C5. The notes are C, D, Eb, E, F, G, Ab, A, G, F, Eb, D, C. The piece concludes with a double bar line and a repeat sign.

A Melodic Minor Scale

52



Musical notation for the A Melodic Minor Scale. It begins with a treble clef and a key signature of one flat (Bb). The scale is written in a single line, starting on A4 and ascending to A5. The notes are A, B, C, D, Eb, E, F, G, F, E, D, C, B, A. The piece concludes with a double bar line and a repeat sign.

Chromatic Scale

56



Musical notation for the Chromatic Scale. It begins with a treble clef and a key signature of one flat (Bb). The scale is written in a single line, starting on Bb4 and ascending to Bb5. The notes are Bb, B, C, C#, D, D#, E, E#, F, F#, G, G#, A, Ab, A, Bb. The piece concludes with a double bar line and a repeat sign.

59



Musical notation for the Chromatic Scale. It begins with a treble clef and a key signature of two flats (Bb and Eb). The scale is written in a single line, starting on Bb4 and ascending to Bb5. The notes are Bb, B, C, C#, D, D#, E, E#, F, F#, G, G#, Ab, A, Bb. The piece concludes with a double bar line and a repeat sign.